

Pagosa Springs High School



800 South 8th Street
Pagosa Springs, CO 81147

Year Built: 1998

Site Area: 77

Total Number of Buildings: 2

Number of Detached Buildings: 0

Total Building Area: 130,000

Main Building: 120,000

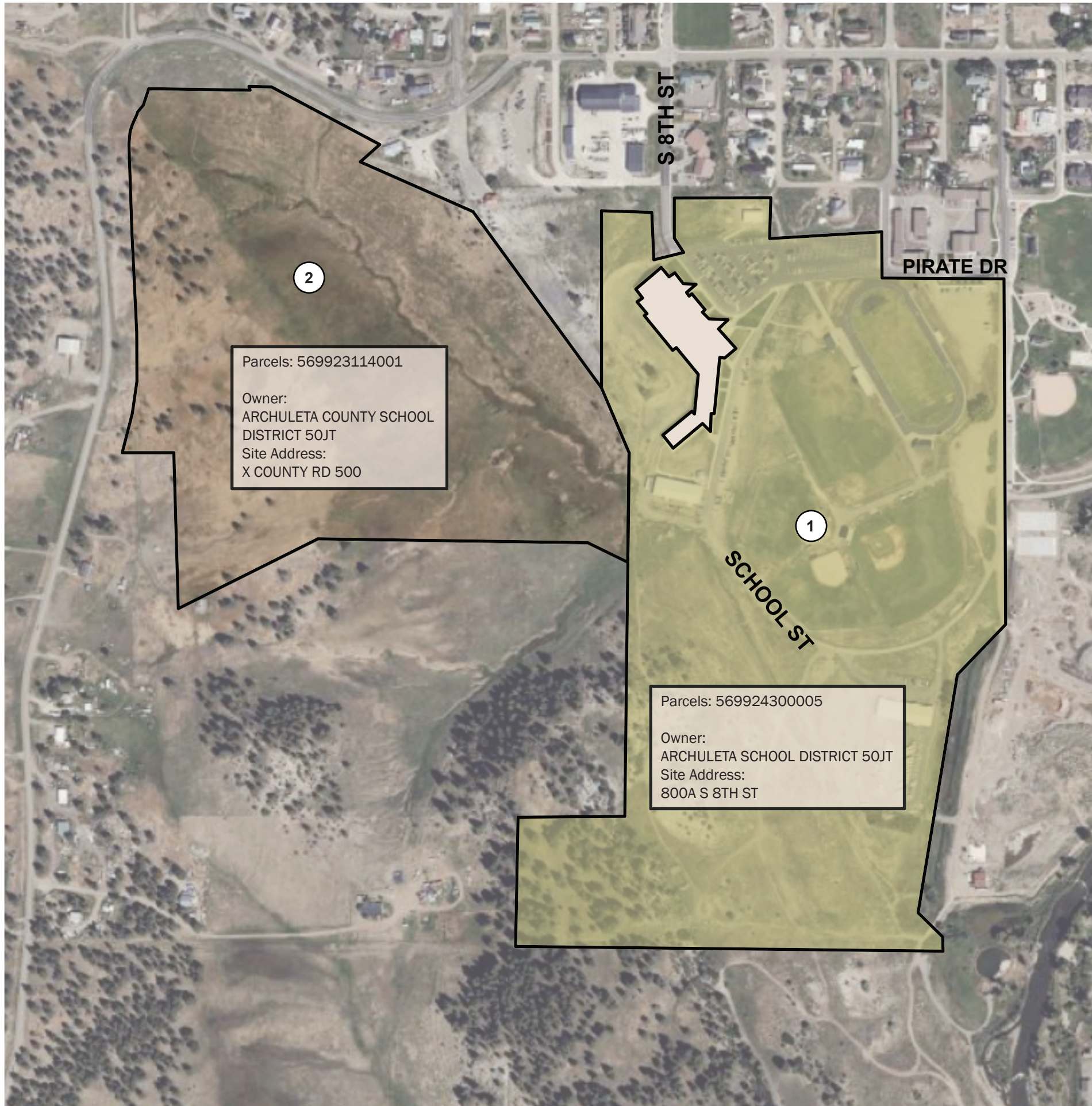
Detached Building(s): 10,000

Building Capacity: 582

Current 2024-2025 Enrollment: 435

Grades Served: 9-12

Project Summary: The Pagosa Springs High School rests upon a 77-acre site in a residential / rural area of Pagosa Springs, Colorado. This facility was constructed in 1998 and serves grades 9-12. The south wing of the building has several classrooms and teacher planning spaces. The central part of the building has larger classrooms, several art spaces, and administrative areas. The north wing is dedicated to physical education, arts, and the cafeteria. The second level of the main high school building has classrooms, teacher planning spaces, and the library. The one-level CTE building has several classrooms, a shop, and a space for the San Juan Mountain Alternative School. The main building is approximately 120,000 square feet while the CTE building is around 10,000 square feet. A baseball field, soccer field, football field, and district transportation facility are also located on the site, just east of the high school buildings.



SITE INFORMATION

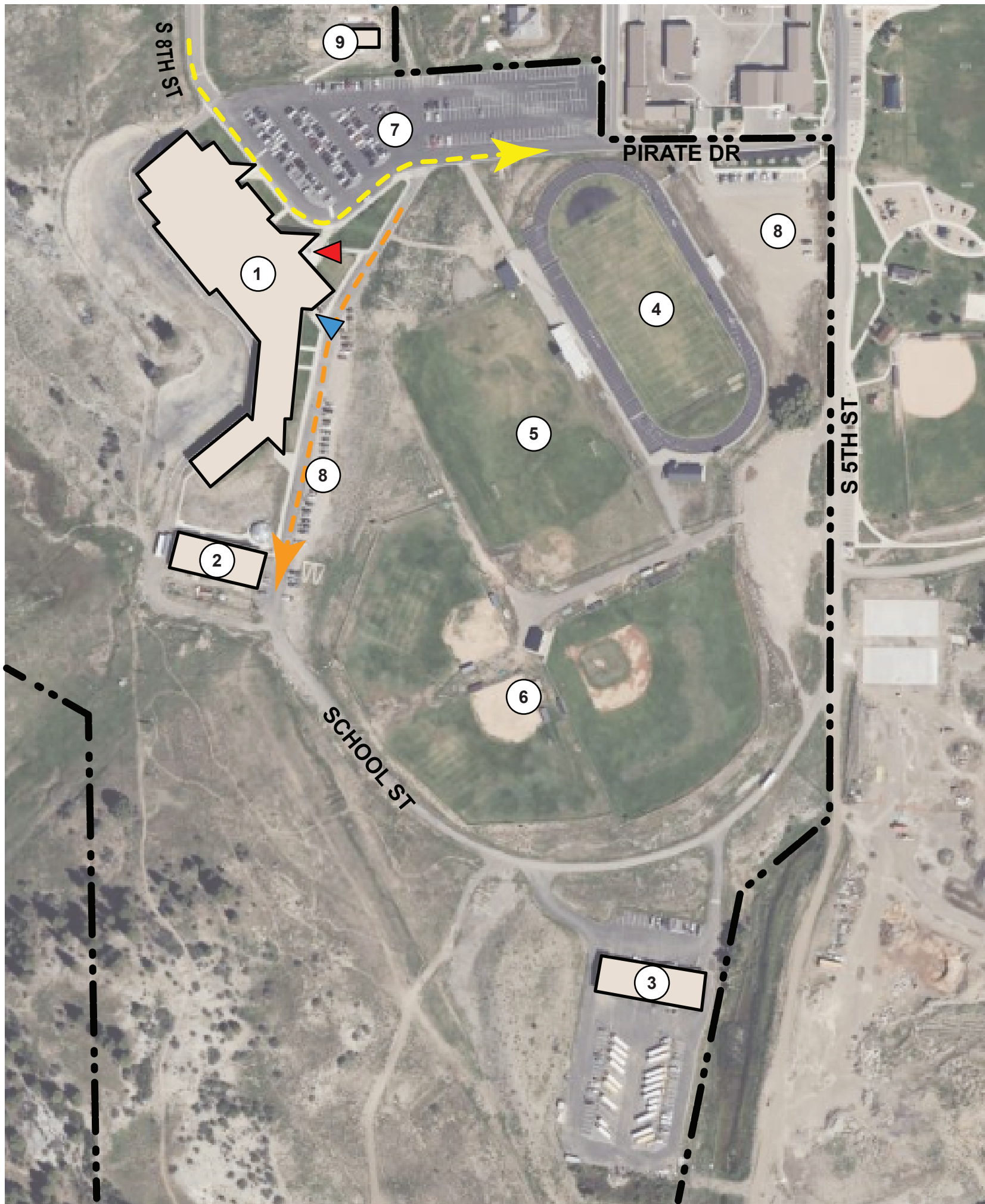
ADDRESS: 800 SOUTH 8th STREET
 PAGOSA SPRINGS, CO 81147

PAGOSA SPRINGS HIGH SCHOOL SITE	76.87 ACRES
ADJACENT PROPERTY	52 ACRES
TOTAL SITE AREA:	128.87 ACRES

KEY PLAN LEGEND

1. PAGOSA SPRINGS HIGH SCHOOL SITE
2. ADJACENT PROPERTY





SITE INFORMATION

ADDRESS: 800 SOUTH 8TH STREET
PAGOSA SPRINGS, CO 81147

MAIN BUILDING AREA:	120,000 SF
DETACHED BUILDING AREA:	10,000 SF
TOTAL ATHLETIC FIELD AREA:	520,848 SF
PARKING LOT:	109,159 SF
UNPAVED PARKING AREA:	54,727 SF
LANDSCAPE:	19,077 SF
TOTAL SITE AREA:	76.87 ACRES

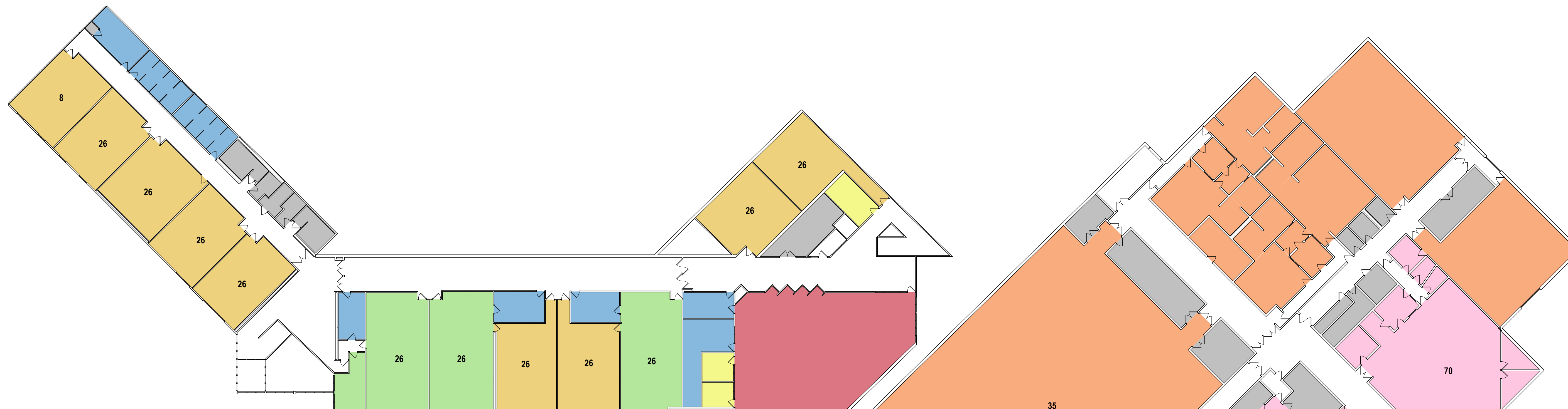
KEY PLAN LEGEND

1. PAGOSA SPRINGS HIGH SCHOOL
2. CTE BUILDING
3. DISTRICT TRANSPORTATION FACILITY
4. FOOTBALL FIELD
5. SOCCER FIELD
6. BASEBALL FIELD
7. PARKING LOT
8. UNPAVED PARKING AREA
9. SAN JUAN MOUNTAIN (ALTERNATIVE) SCHOOL

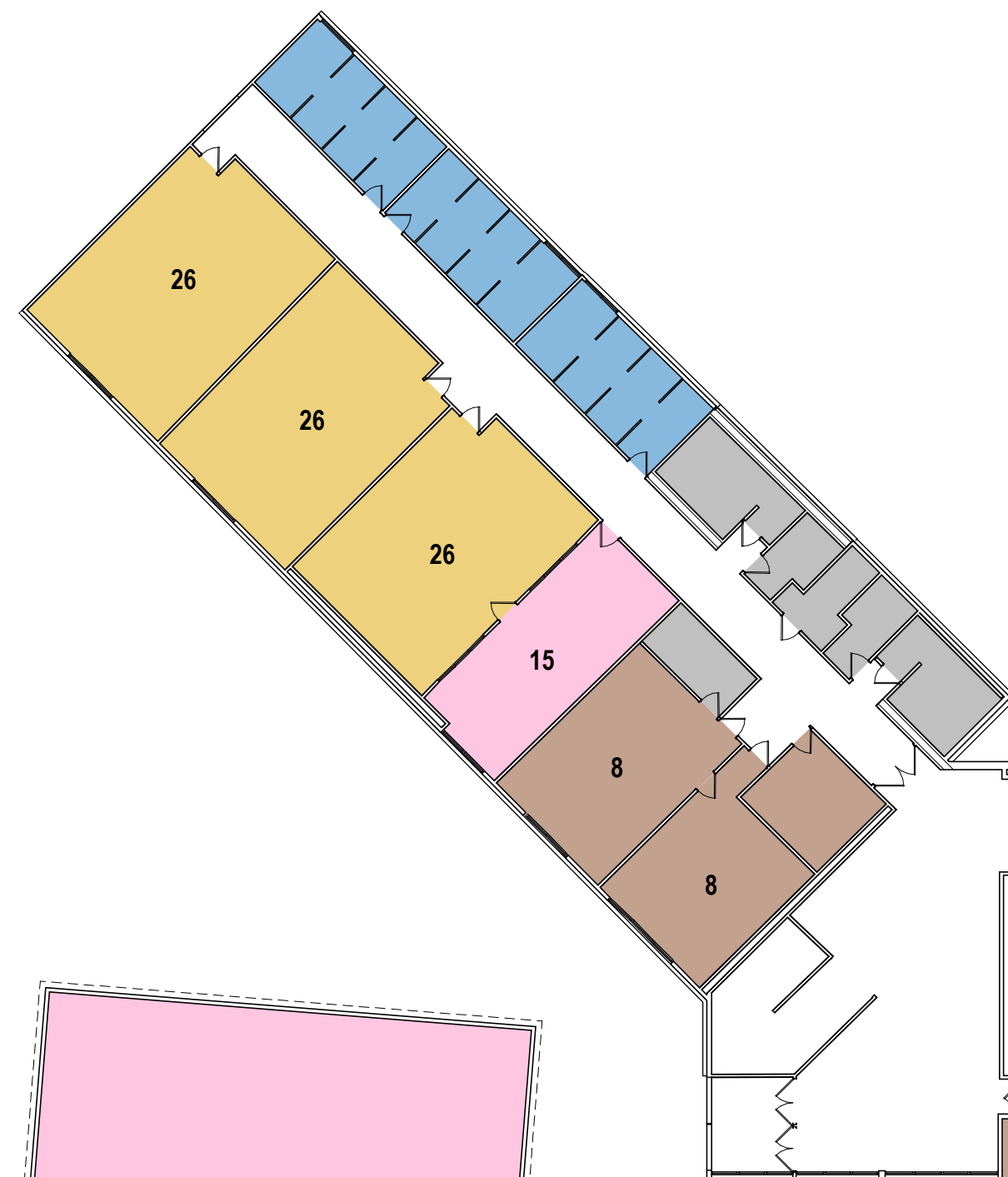
SITE PLAN LEGEND

- SITE BOUNDARY
- PERMANENT BUILDING
- BUS PICK-UP & DROP-OFF
- PARENT PICK UP & DROP-OFF
- MAIN ENTRY
- DISTRICT SERVICE DRIVE /ENTRY





2ND FLOOR CAPACITY PLAN
1" = 20'-0"



PAGOSA HS CAPACITY PLAN
NORTH
0' 10' 20' 40' 80'

TOTAL PROGRAM CAPACITY = 776
TOTAL FUNCTIONAL CAPACITY = 631 x 0.75 = 582

Functional capacity of a school must accurately describe the student capacity based on both facility and educational program goals for a specific school. Operational factors are considered including: academic schedule flexibility, teacher academic planning, and bell schedules. The functional capacity factor for high schools (6/8 PERIODS = 0.75).

CURRENT ENROLLMENT (9-12): 435
CURRENT ENROLLMENT / FUNCTIONAL CAPACITY = 74%

CDE Recommended size (30 student occupancy):
9th-12th is 840 SF
Current average classroom sizes:
9th-12th is 757 SF

VERIFY USE IN 2024.
PAC - PIRATE ACHIEVEMENT CENTER, IS NOW SAN JUAN MOUNTAIN (ALTERNATIVE) SCHOOL. SEPARATE SCHOOL BUILDING ON HIGH SCHOOL SITE (2023)

- EDUCATIONAL DEPARTMENT LEGEND**
- ADMINISTRATION
 - INSTRUCTIONAL AREAS
 - ARTS / CTE
 - SCIENCE
 - BREAKOUT SPACE
 - DINING / COMMONS
 - LIBRARY INFORMATION CENTER
 - PE / ATHLETICS
 - SPECIAL EDUCATION / INTERVENTION
 - SUPPORT

CLASSROOM CAPACITY

CLASSROOM	ROOM NO	AREA	PROGRAM CAPACITY	CDE SF/PUPIL	CDE CAPACITY	SUBTOTAL FUNCTIONAL CAPACITY
Art/Music						
ART	68	840 SF	26	45	19	26
BAND AND CHOIR	328	2134 SF	70	35	61	70
CLASSROOM	420	708 SF	26	28	25	0
DRAFTING	418	1124 SF	26	28	40	0
FIRE	419	804 SF	26	28	29	0
PAC	421	3209 SF	26	28	115	0
PHTV	49	441 SF	15	28	16	0
POTTERY	69	806 SF	26	45	18	26
SHOP	417	2693 SF	26	60	45	0
Art/Music: 9		12759 SF	267		367	122
Instructional Areas						
BUSINESS	67	824 SF	26	28	29	26
COMPUTER SCIENCE	382	840 SF	26	32	26	26
ENGLISH	47	700 SF	26	28	25	26
ENGLISH	398	762 SF	26	28	27	26
ENGLISH	415	742 SF	26	28	27	26
ENGLISH	416	784 SF	26	28	28	26
FLEX	65	812 SF	26	28	29	26
FLEX	377	717 SF	8	28	26	8
FOREIGN LANGUAGE	400	797 SF	26	28	28	26
MATH	43	717 SF	26	28	28	26
MATH	45	703 SF	26	28	25	26
MATH	64	826 SF	26	28	29	26
SOCIAL STUDIES	380	704 SF	26	28	25	26
SOCIAL STUDIES	389	700 SF	26	28	25	26
SOCIAL STUDIES	390	728 SF	26	28	26	26
Instructional Areas: 15		11358 SF	372		402	372
PE/Athletics						
P.E.	321	9059 SF	35	300	30	35
PE/Athletics: 1		9059 SF	35		30	35
Science						
SCIENCE LAB	396	1011 SF	26	44	23	26
SCIENCE LAB	397	1049 SF	26	44	24	26
SCIENCE LAB	402	998 SF	26	44	23	26
Science: 3		3058 SF	78		70	78
Special Education						
SPEC. ED.	50	452 SF	8	37	12	8
SPEC. ED.	53	377 SF	8	37	10	8
SPEC. ED.	63	709 SF	8	28	25	8
Special Education: 3		1537 SF	24		48	24
		37771 SF	776		916	631

PAGOSA HS CAPACITY PLAN